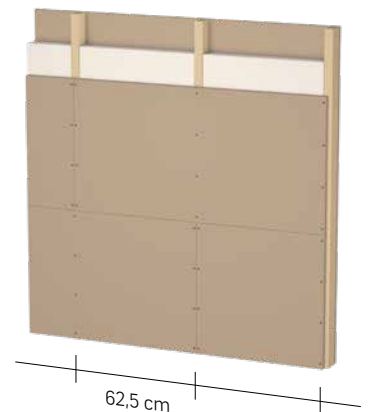


LEMIX heavy clayboards 09.014, 09.015

09.014 thickness = 22 mm, 09.015 thickness = 16 mm

DIN 18948

- Pure clay mass
- Heavy duty



Drywall clayboards for planking wood and metal post and beam constructions on interior walls, facing and ceiling and roof surfaces. The heavy clayboard brings a lot of clay into the room, with all the material's positive impacts on the indoor climate, especially from a heating perspective. It can be cut with a handheld circular saw. The 22 mm thick clayboard enables a wide substructure grid (62.5 cm) to be created for walls.

For technical consulting service teams
and sales see www.claytec.de
Product data and application
see reverse

GERMANY
Claytec e.K.
Nettetalter Straße 113-117,
41751 Viersen
Phone: +49 2153 918-0
www.claytec.de

LEMIX heavy clayboards

09.014 thickness 22 mm, 09.015 thickness 16 mm

Clayboard (LP), (A), (B) - DIN 18948 - MHK II - 1.6 - 22/16

Field of application Clayboards for planking indoor wood and metal post and beam constructions. For interior walls, skirting and ceiling and roof surfaces in drywall construction. For complete cladding of wooden materials and chipboard panels. As a substrate for clay plaster SanReMo, YOSIMA clay designer plaster or CLAYTEC clay topcoat fine with CLAYFIX clay paint.

Composition Clay, earth, wood fibre, starch, hessian mesh (rear side only)

Material properties Surface hardness ≤ 15 mm, flexural strength ≥ 0.8 N/mm², surface tensile strength ≥ 0.1 N/mm², gross density class 1.6, thermal conductivity 0.353 W/mK, cp approx. 1.1 kJ/kgK (thickness = 22 mm 35.1 kJ/m²K, thickness = 16 mm 25.5 kJ/m²K), μ 5/10, water vapour absorption class WS II, building material class A1 (room-facing side).

Building component values Various soundproofing and fire protection test certificates are available for dividing walls and planking with LEMIX clayboards, see <https://lemix.eu/media/upload/downloads/Lemix-Datenblatt.pdf>

Dimensions and weights Dimensional tolerance class MHK II, width = 125.0 cm (± 4 mm), length = 62.5 cm (± 4 mm), thickness = 22 mm or 16 mm (+ 1, - 3 mm). Evenness = - 1 mm. Weight: 22 mm thick approx. 32 kg/m² = approx. 25 kg; 16 mm thick approx. 23 kg/m² = approx. 18 kg

Supply form Shrink-wrapped on pallets of 40 units

Storage Store resting on pallets; keep straight and dry. There is no time limit on storage.

Amount required Approx. 1.28 panels/m². When calculating amount required, allow about 10% extra for wastage etc.

Substructure Walls: thickness 22, axial spacing 62.5 cm (= 125 cm/2). Thickness 22 Ceilings and sloping roofs: axial spacing 31.25 cm (=125 cm/4); 16 mm thick: walls, ceilings and sloping roofs: axial spacing 31.25 cm (= 125 cm/4).

You are strongly advised not to attach the material directly to load-bearing parts of the building (e.g. rafters, beams). ATV DIN 18334:2016-09 applies with regard to the maximum moisture content of substructure wood.

Processing For transportation in the warehouse and on the building site, we recommend the **transport aid LEMIX TH**, aluminium frame with handles, 80 x 63 cm, approx. 2.6 kg (CLAYTEC 182/400).

Moisture stresses arising from plasters and screeds applied when wet are not permitted. The relative humidity during storage and after installation should not generally exceed 70%. Entry of moisture via the plasterwork must be kept as low as possible. The material may be cut with a jigsaw, handheld circular saw or cutting disc. Plaster must be applied to the clay side of the panel, not the hessian side.

The boards are cut with a jigsaw or handheld circular saw. The FESTOOL plunge saw TSC 55 or diamond cutting system DSC-AG 125 Plus-FS are particularly suitable, see also the clip at www.youtube.com/watch?v=5FFMZ6PX7dY

Planking (on substructure): the lowest row of panels must be installed at a slight distance from the floor ('air gap'). The panels are abutted against the substructure. They are mounted at a 90° angle to the substructure and installed in an interlocking pattern. Cross joints must not be used and horizontal or vertical joints must not be continuations of the borders of wall openings. The offset must be at least 25 cm. Attached to wood using LEMIX clayboard screws 5 x 60 mm with a flat round head and partial thread, driven by TX25 (CLAYTEC 35/115). To attach to metal, use WÜRTH quick assembly screws with a drive point and 04164 washers, or KNAUF all-purpose screws (FN 4.3 x 35 mm) with washers. Spacing between screws ≤ 30 cm, i.e. 3 fastening points are required per intersection between panel and substructure (62.5 cm grid: 9 screws; 31.25 cm grid: 15 screws). Distance to edge of screws (axis) 15 mm.

Planking (flat): On walls made of wood or wooden composites, flat clamping with broad back staples is also possible, e.g. using BEHRENS (BEA) 146/55NR HZ. Spacing between clamps approx. 8 cm, distance to edges 20 mm.

In bathrooms, use rustproof fasteners only.

Subsequent processing If necessary, carefully fill gaps of ≥ 1 mm in width with clay topcoat fine 06 and leave to dry.

Carefully dust panels; if necessary, moisten slightly before use (with spray).

Reinforcement layer of clay topcoat fine 06 or clay plaster SanReMo as well as glassfibre mesh. After drying, professionally apply YOSIMA clay design plaster, YOSIMA colour clay surfacer or CLAYFIX clay paint.

Wall panel heating: Spray on an initial layer of clay undercoat plaster with straw, clay plaster, mineral clay plaster or SanReMo in a layer thickness not exceeding 8 mm. After drying, fill the gaps as far as the pipe clamp for the wall heating. Apply heat to dry the entire basecoat layer. For further instructions, refer to the CLAYTEC 'Clay plasters worksheet'.